

HESEB Beamline

Introduction and Science

Wolfgang Eberhardt
DESY



SESAME

Synchrotron-light for Experimental Science and Applications in the Middle East

Founded in 2004 as a UNESCO Project

- H. Winick, G. Voss, H. Schopper
- Donation of BESSY I as a jump start



Member States

Jordan
Cyprus
Egypt
Iran
Israel
Pakistan
Palestinian Authority
Turkey



The HESEB Soft X-ray Beamline

Funded by the Helmholtz Gemeinschaft : Start January 2019-----4 years duration----- 3.5 M €

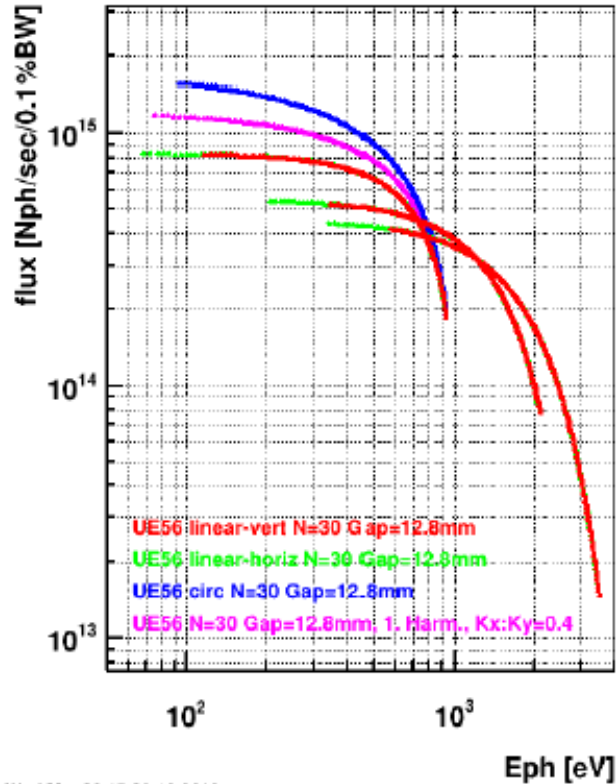


- **Variable polarization undulator based soft X-ray beamline dedicated to enable advanced photoemission/spectroscopy experiments**
- **Helmholtz consortium provides beamline in basic version: (absorption spectroscopy with polarized soft X-rays)**
 - Additional Instrumentation/endstations should come from SESAME members----State of the art photoemission (UPS/XPS) ---- RIXS ---- PEEM
 - Project should act as an „anchor“ to seed cooperation between German research institutions/universities and SESAME member communities
- **Project should be driven by cost/performance effectiveness in design, installation and commissioning**
 - build on available and successfully proven standard layout (PGM)
 - ‚off-the-shelf‘ – procurement and installation through manufacturer: FMB (Berlin)

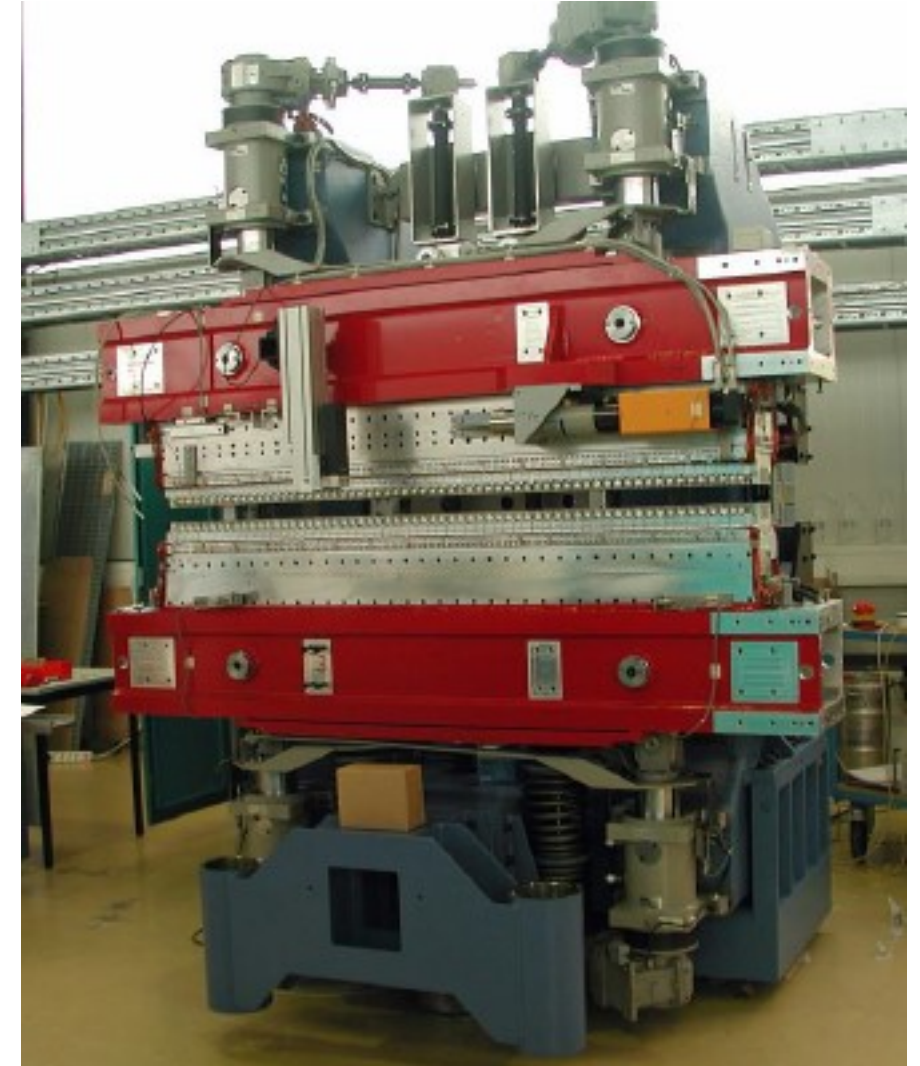
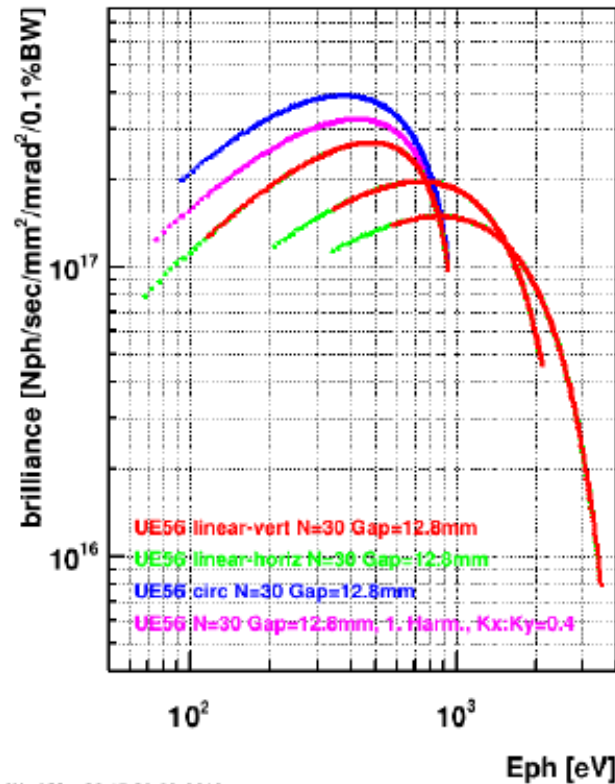
HESEB Beamline

Undulator UE56 with variable polarization

Flux, 2.5 GeV, 400 mA

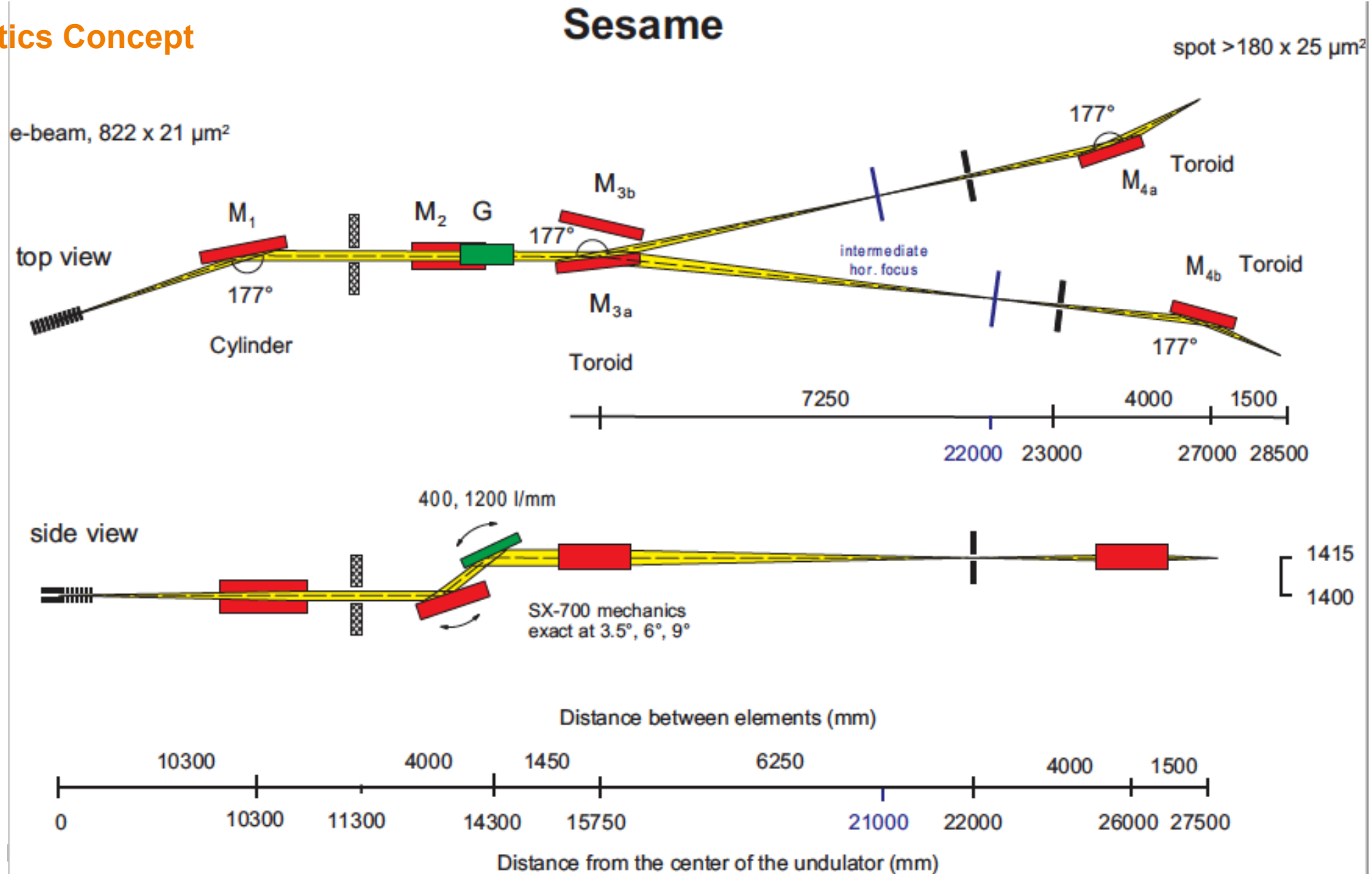


Brilliance, 2.5 GeV, 400 mA



HESEB Beamline

Optics Concept

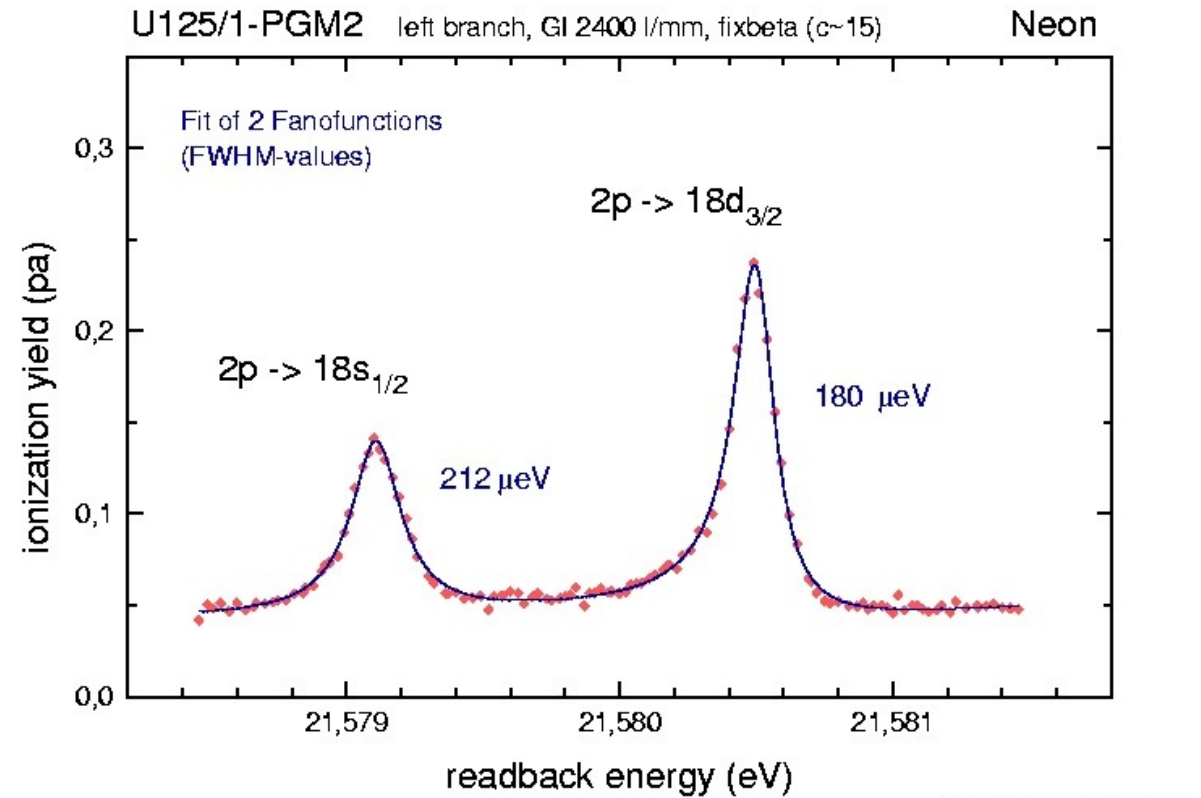
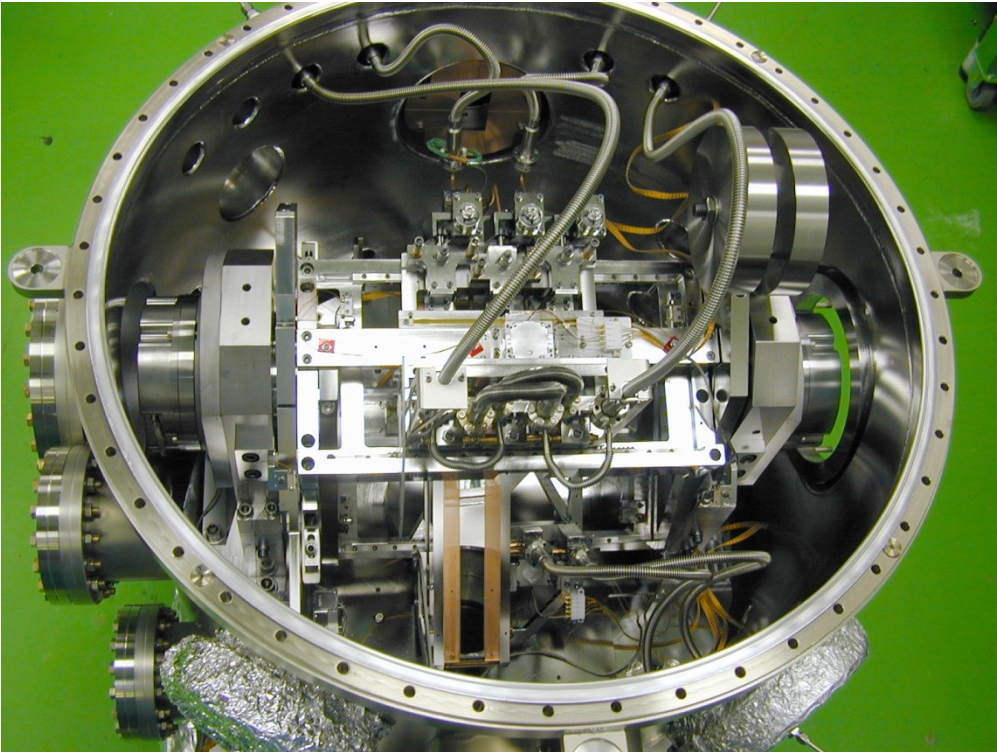


HESEB Beamline

PGM Monochromator

Optics Design by BESSY

Manufactured by ZEISS, JENOPTIK, FMB
for a worldwide market

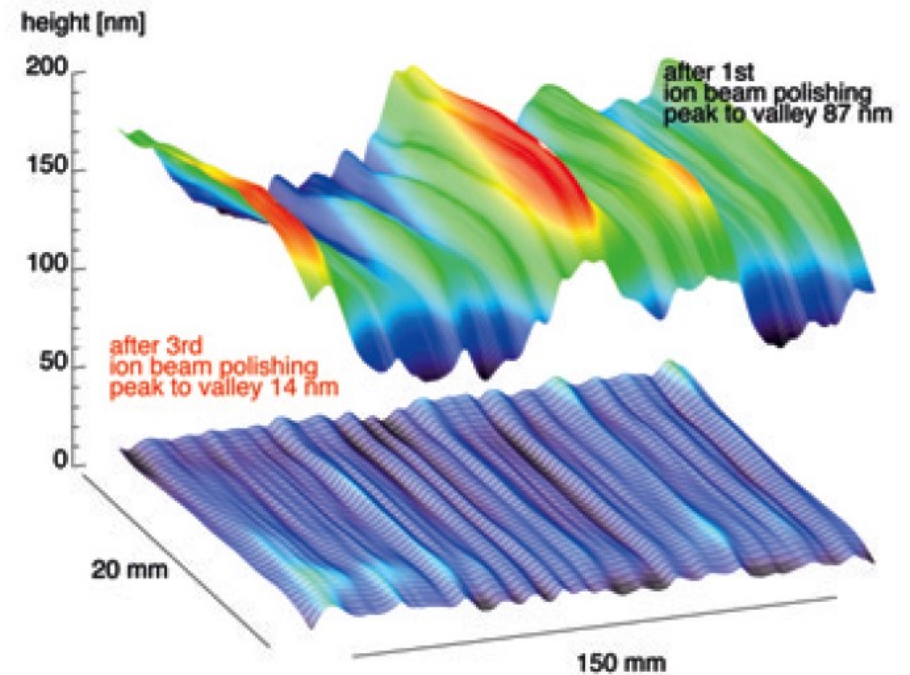
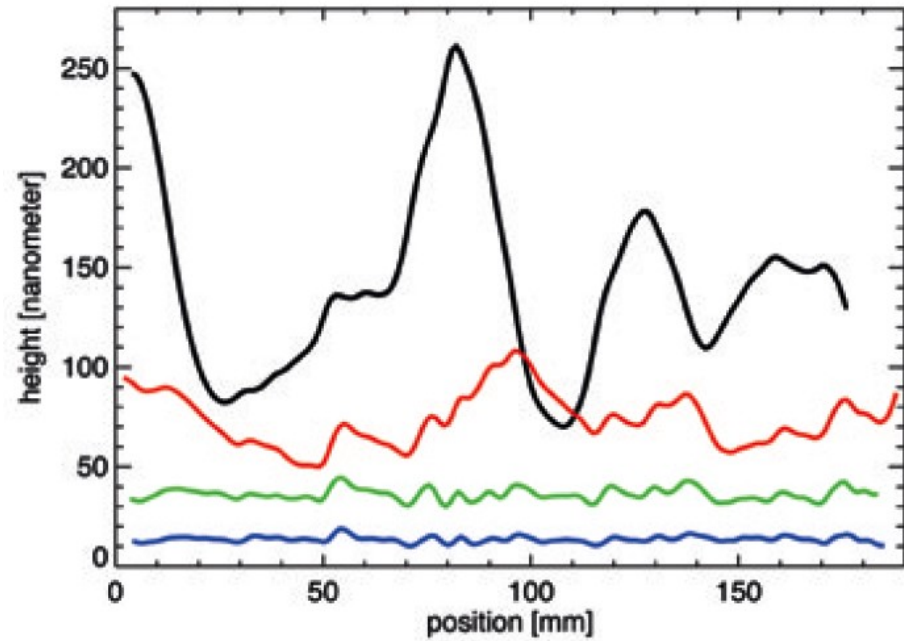


Resolution of 180 μeV
 $E/\Delta E = 1.2 \cdot 10^5$

HESEB Beamline

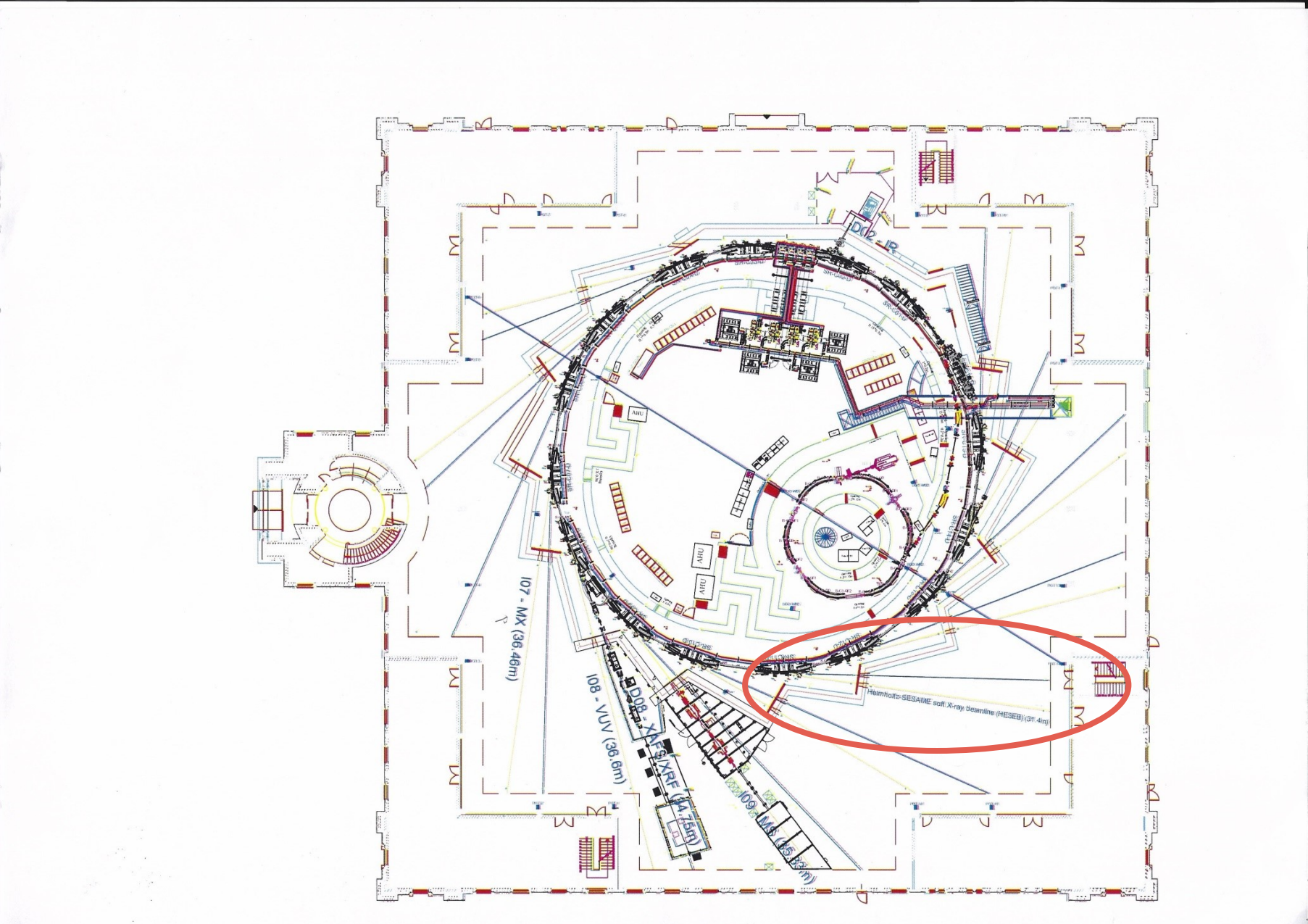
Nanometer Optics Metrology at HZB

2D profiling of optical surfaces
With a precision of an order of
magnitude better than
industry (ZEISS)



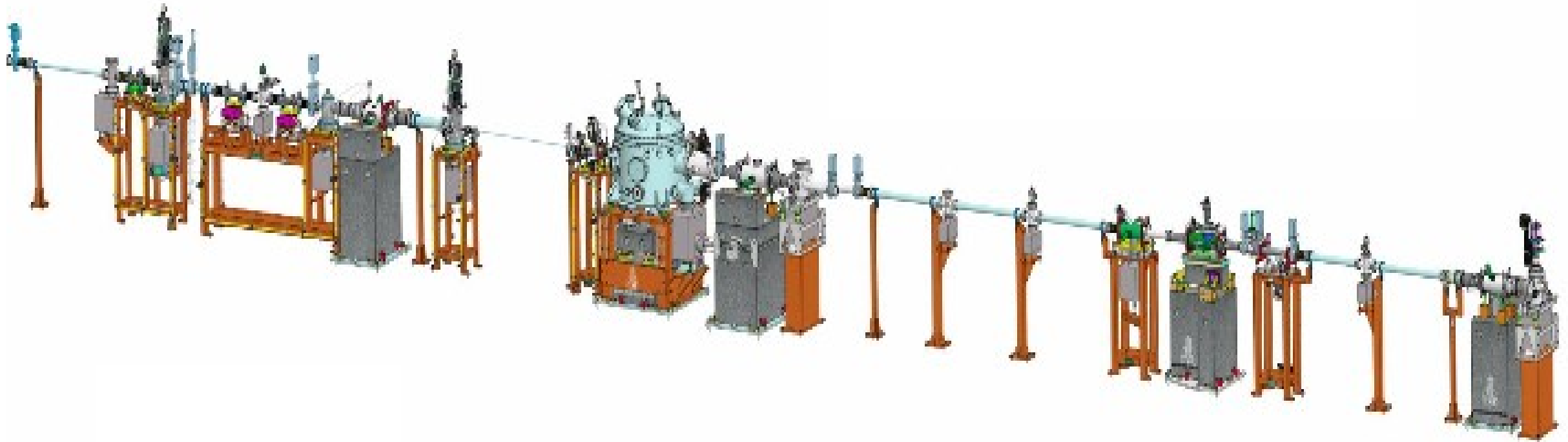
SESAME

Floor Plan



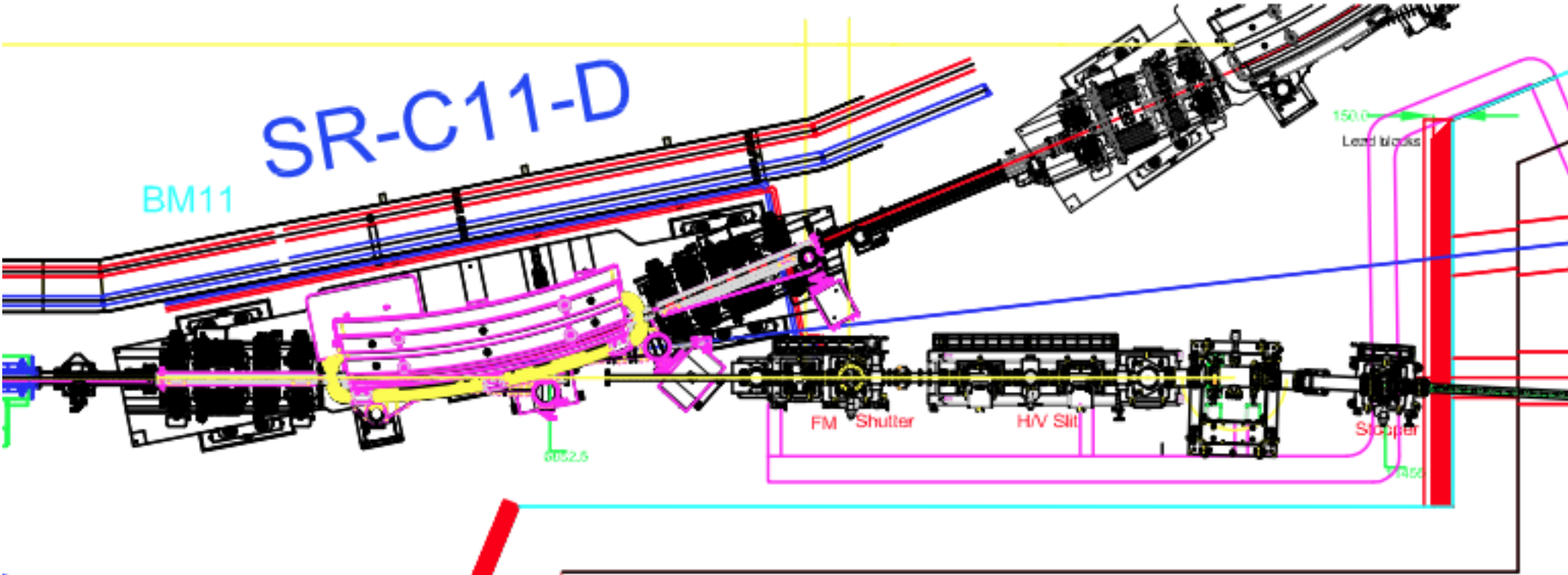
HESEB Beamline

Beamline Final Design



HESEB Beamline

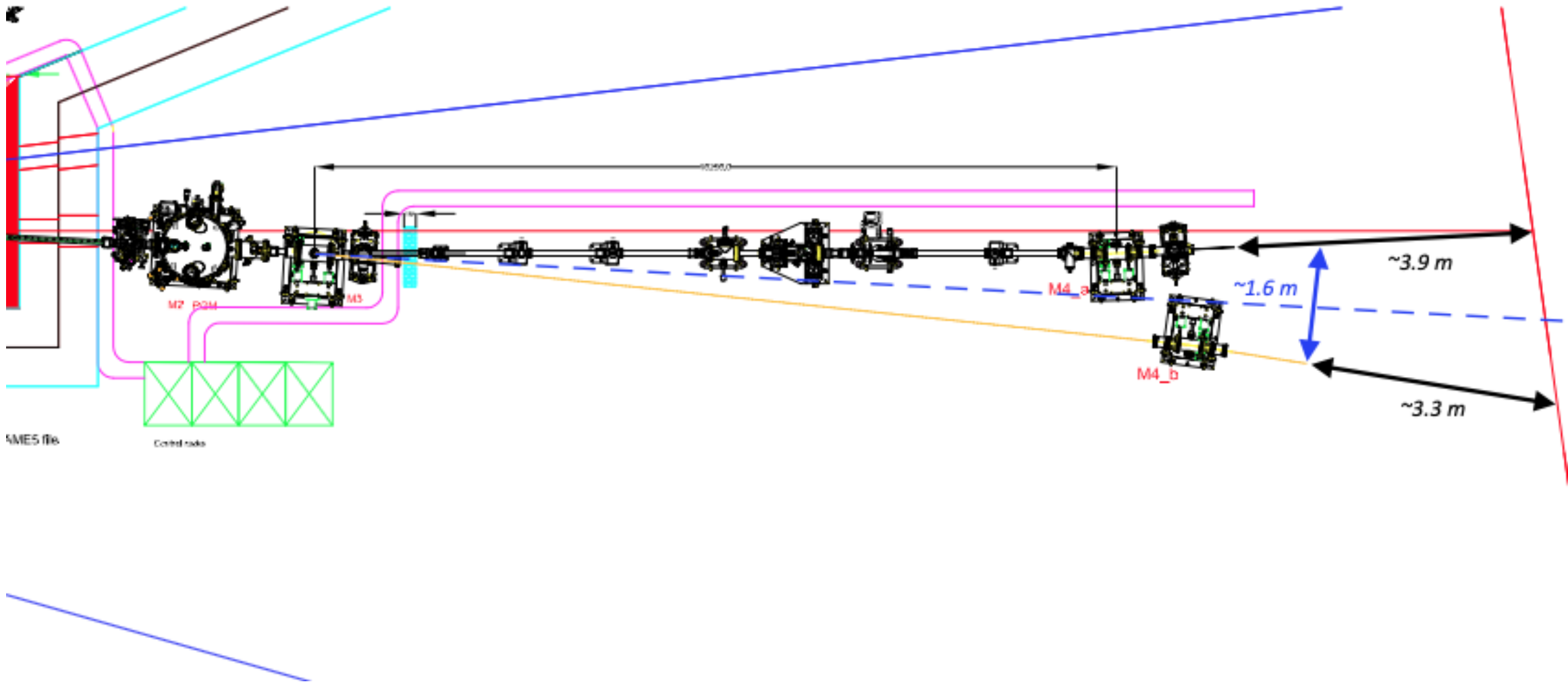
Beamline Layout



based on optical layout SESAME5 file

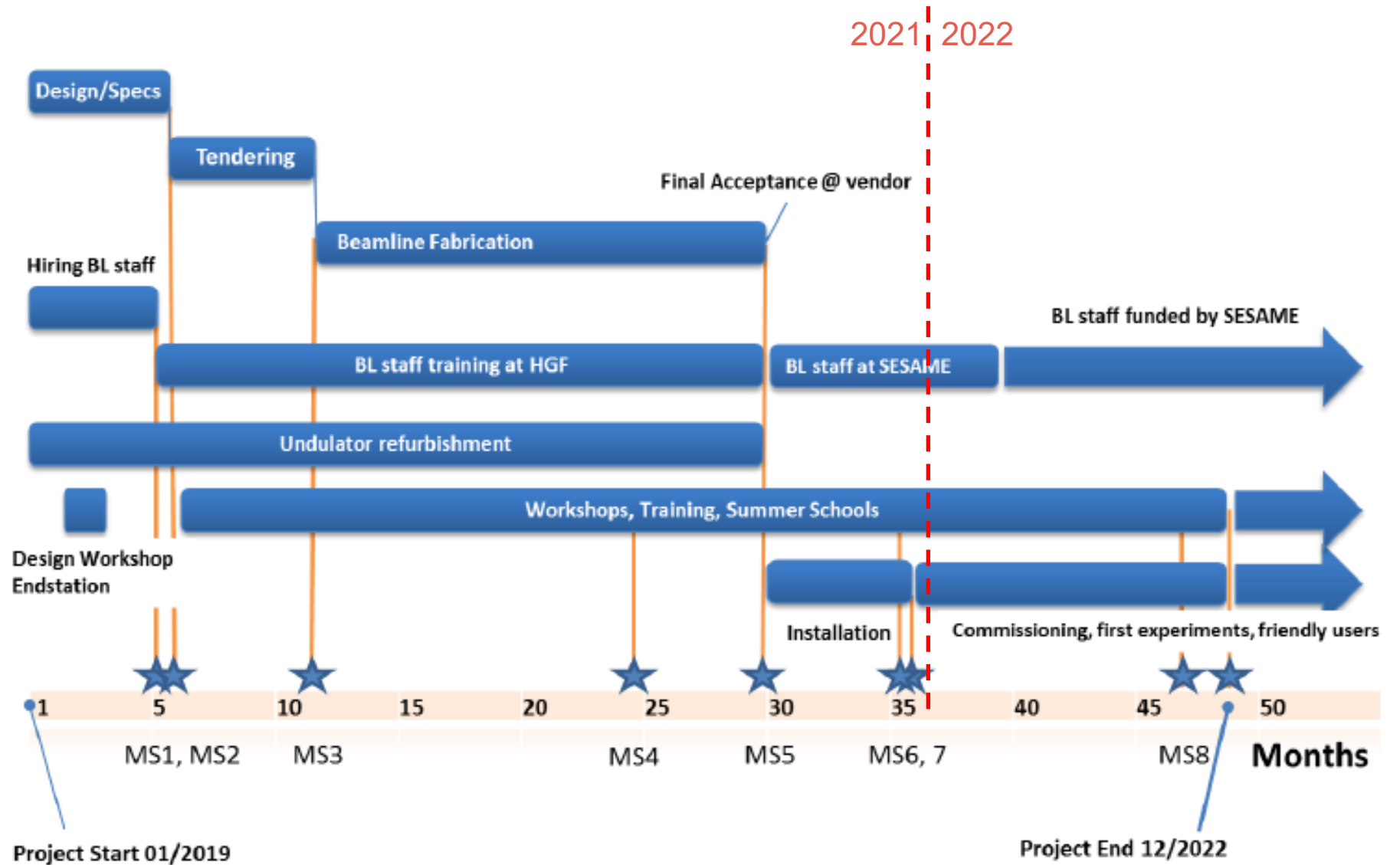
HESEB Beamline

Beamline Layout



HESEB Beamline

Project Time Plan



Soft X-ray Science Examples

Soft X-rays → High Resolution Spectroscopy

Covers the core edges:

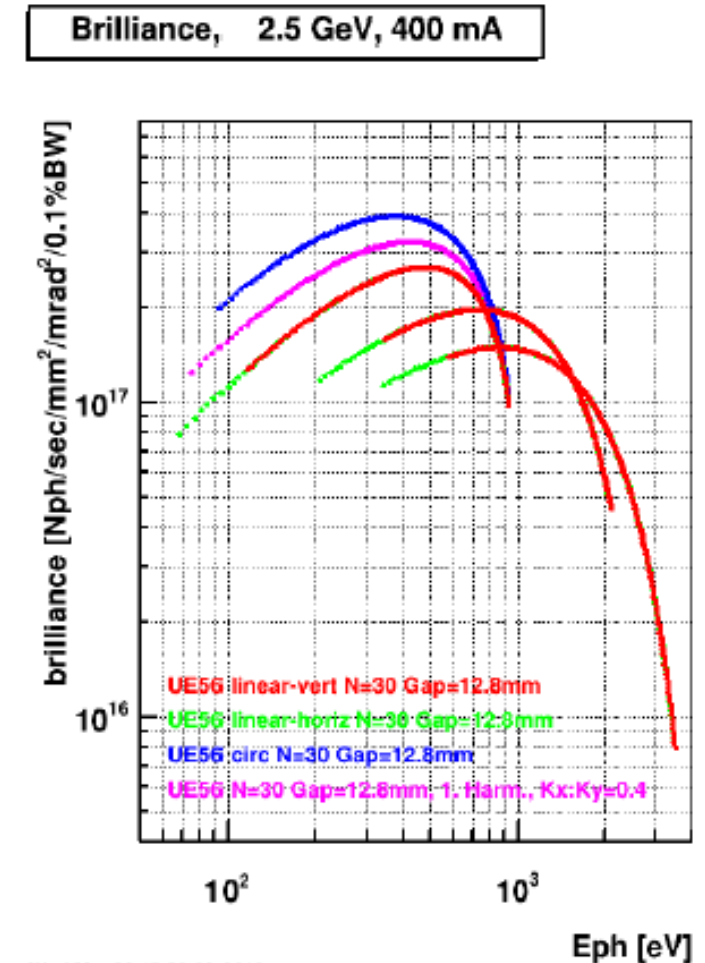
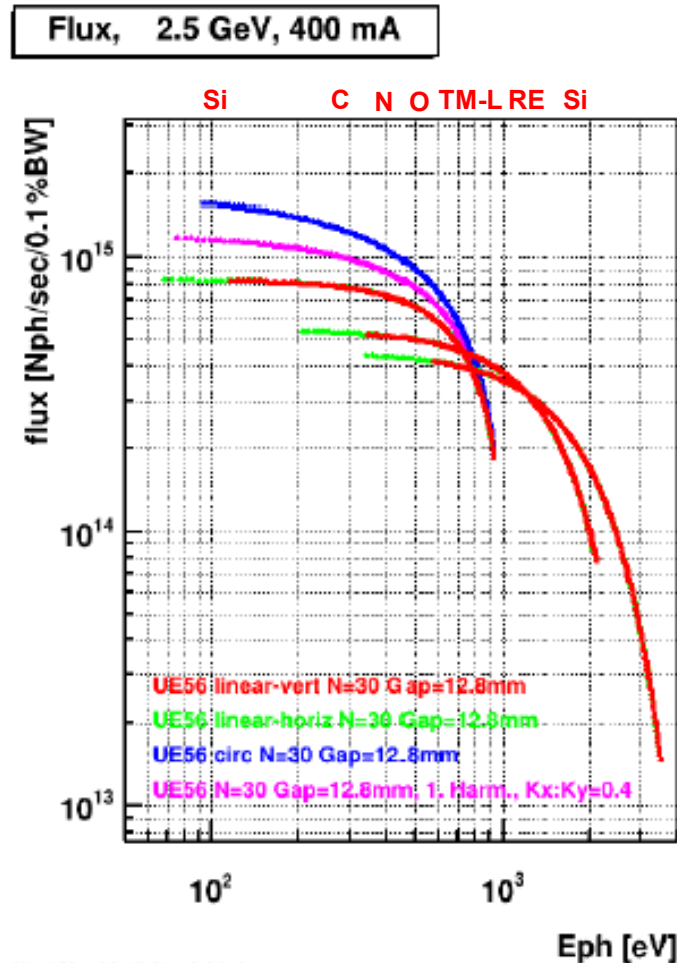
Si L-edge—**semiconductors**

C-, N-, O- Kedge
Organics catalysis

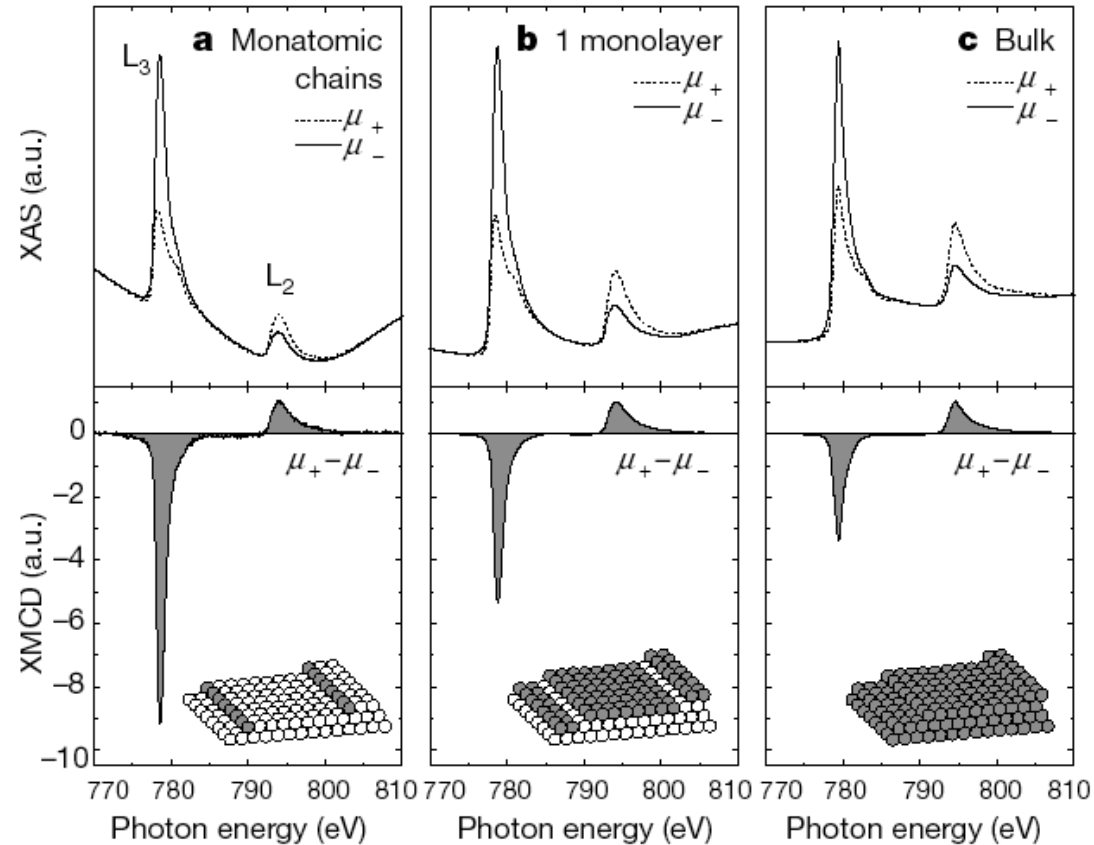
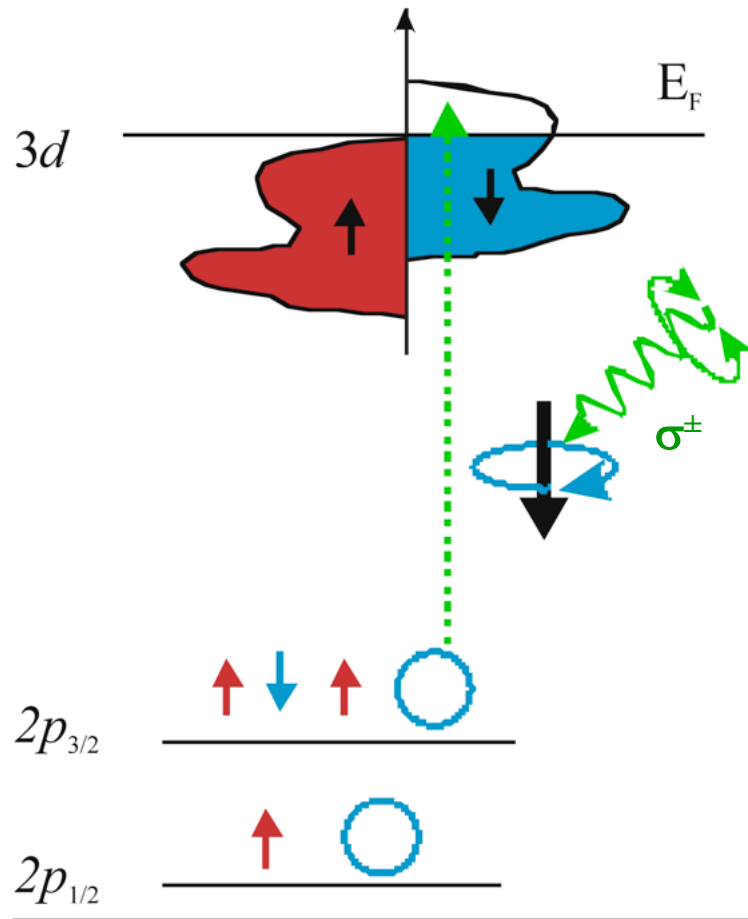
TM-L-edges **magnetics**

RE 3d edges **magnetics**

Al- K-edge, Si-K-edge

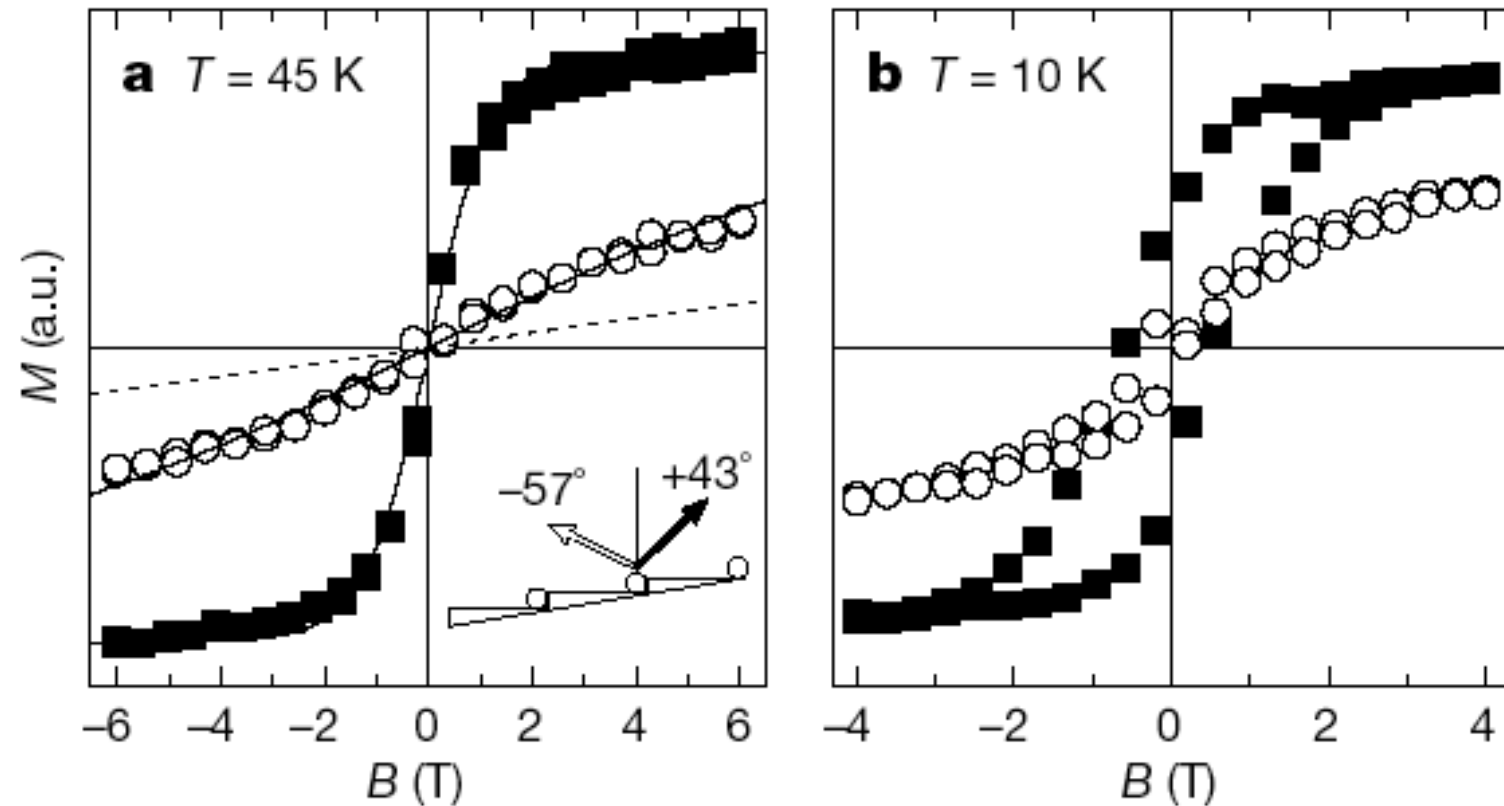
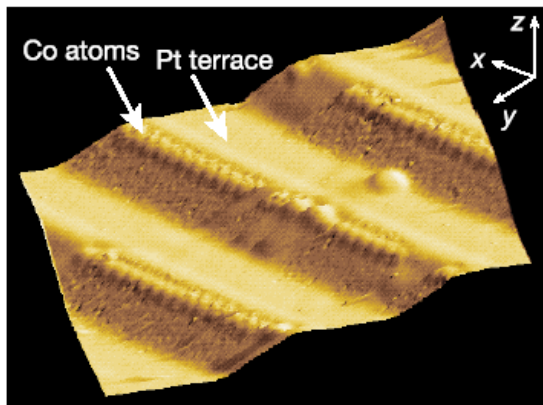
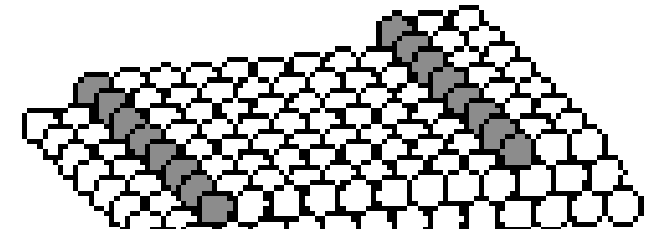
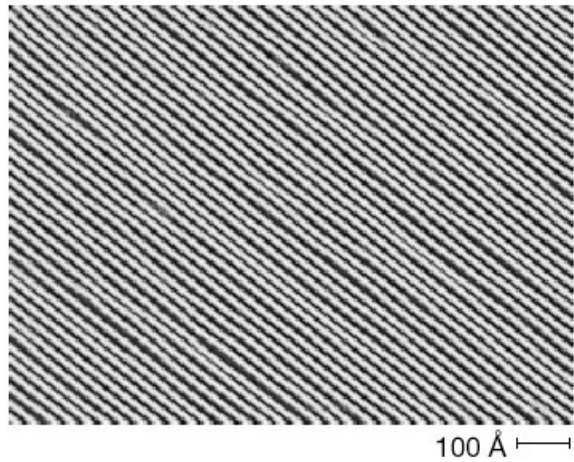


Magnetic Systems → CMXD



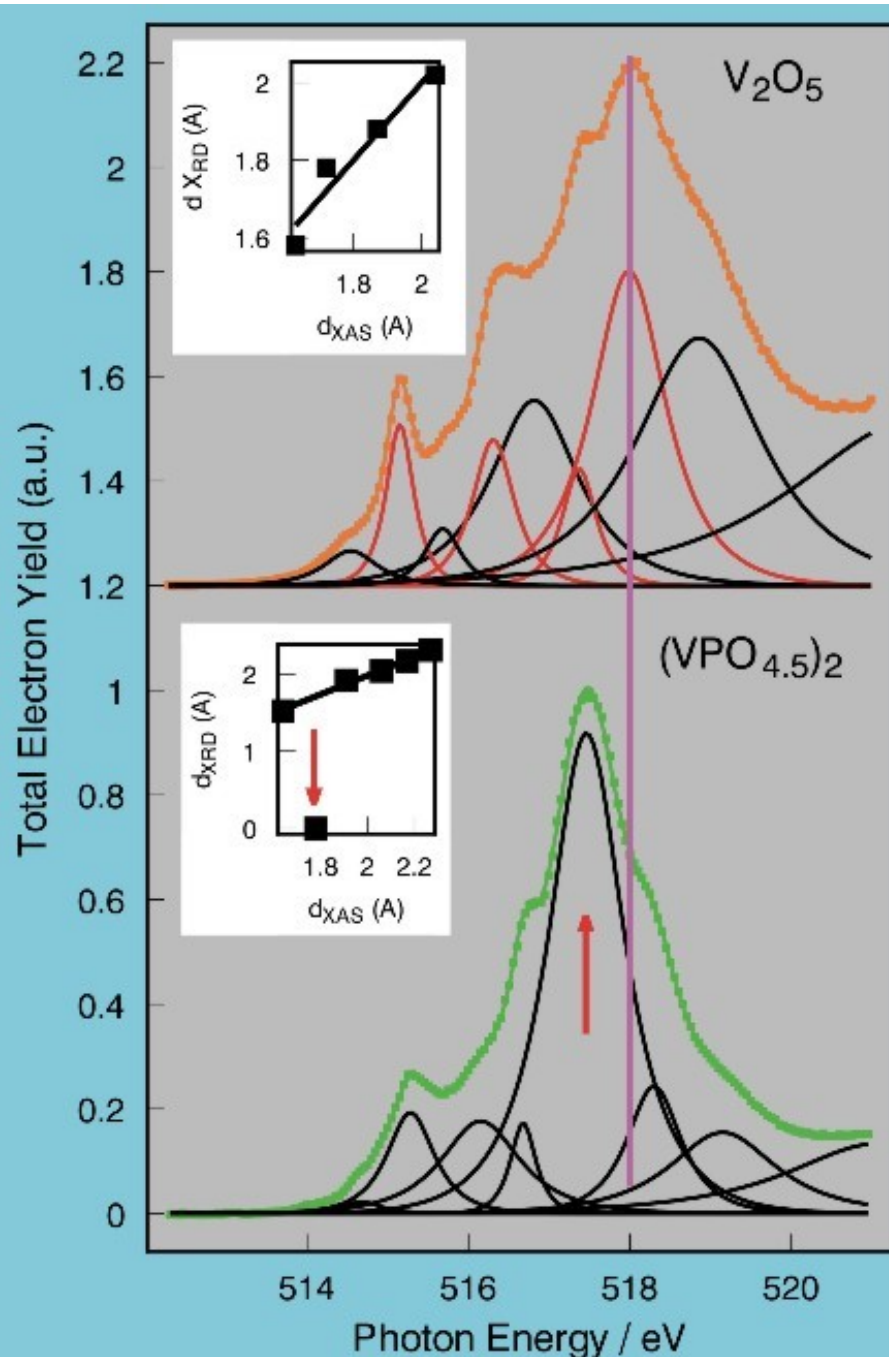
P. Gambardella, A. Dallmeyer, K. Maiti, M. C. Malagoli, W. Eberhardt, K. Kern, C. Carbone, **Nature** **416**, 301 (2002)

Magnetic Systems → Co mono-atomic chain on Pt



P. Gambardella, A. Dallmeyer, K. Maiti, M. C. Malagoli, W. Eberhardt, K. Kern, C. Carbone, **Nature** **416**, 301 (2002)

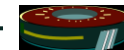
Spectroscopy of catalysts under process conditions



Methane oxidation using a vanadium oxide catalyst reveals an intermediate state which is only present under reaction conditions

NEXAFS spectra of catalysts during chemical reactions

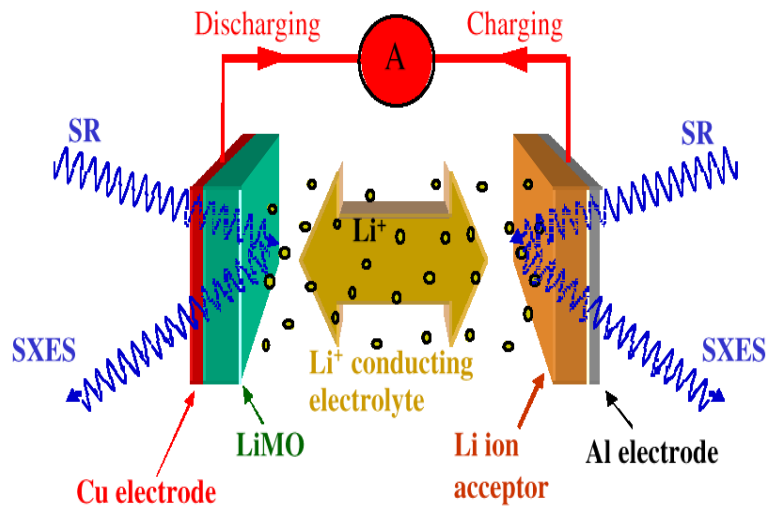
M. Hävecker, R.W. Mayer, A. Knop-Gericke, R. Schlögl (FHI Berlin)



Soft X-rays →

In-situ process monitoring using all photon related spectroscopies

Electrochemistry
Corrosion
Lubrication
Catalysis



Spectroscopy of battery electrodes under operational conditions



Pattern formation during a chemical reaction
G. Ertl FHI Berlin

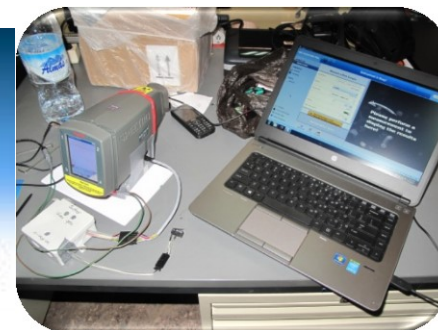
Birgit Kanngießer

**Characterisation and Conservation of Paintings on Walls and Sculpture from
Nabataean Petra
June 2016 – June 2019**

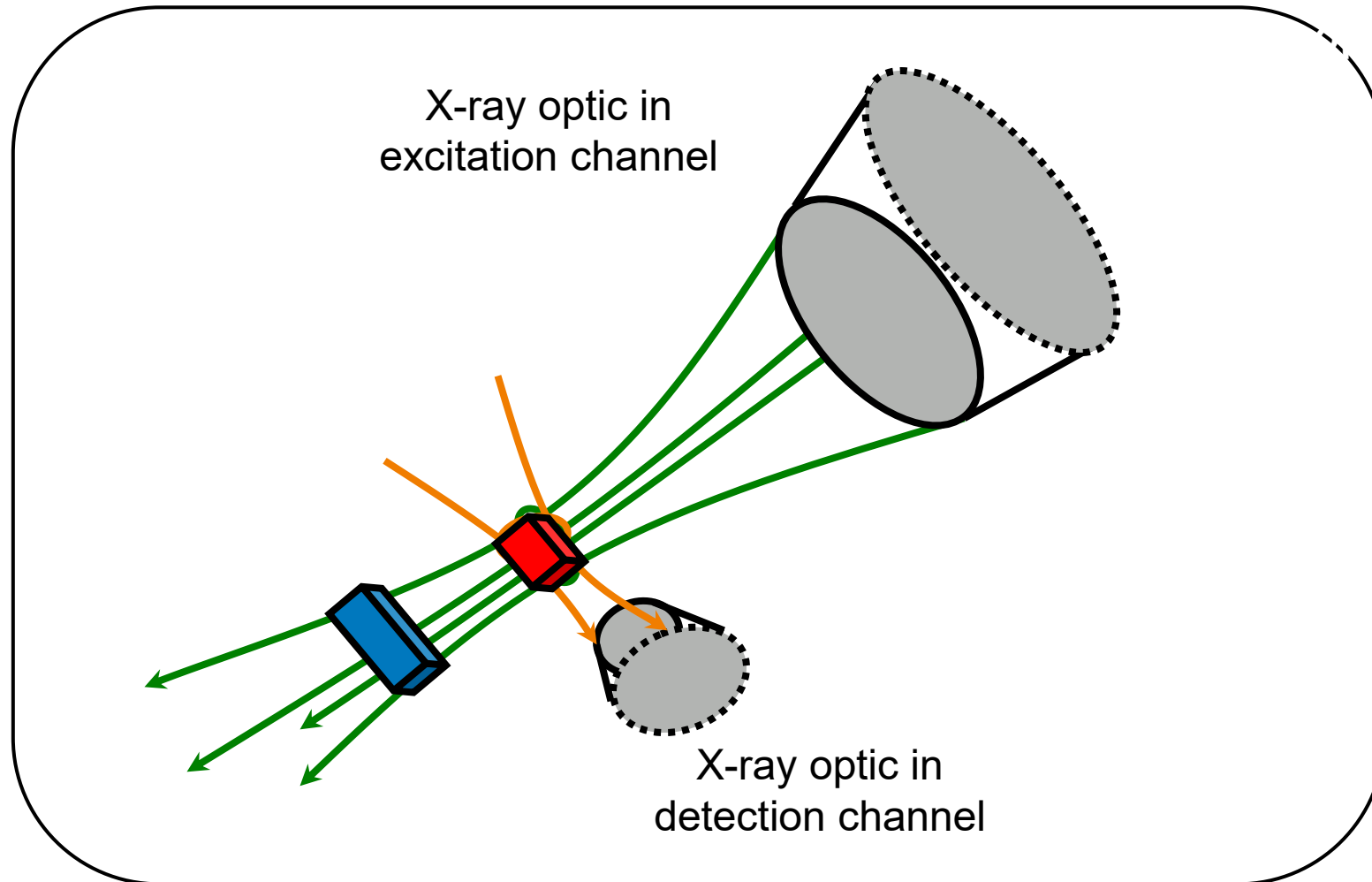


1. Materials analysis and development

- Analytical Investigations of wall paintings and sculpture: in-situ and ex-situ; organic and inorganic, non-invasive & ND
- Development of experimental conservation material for gold: synthesis, characterisation, validation, evaluation



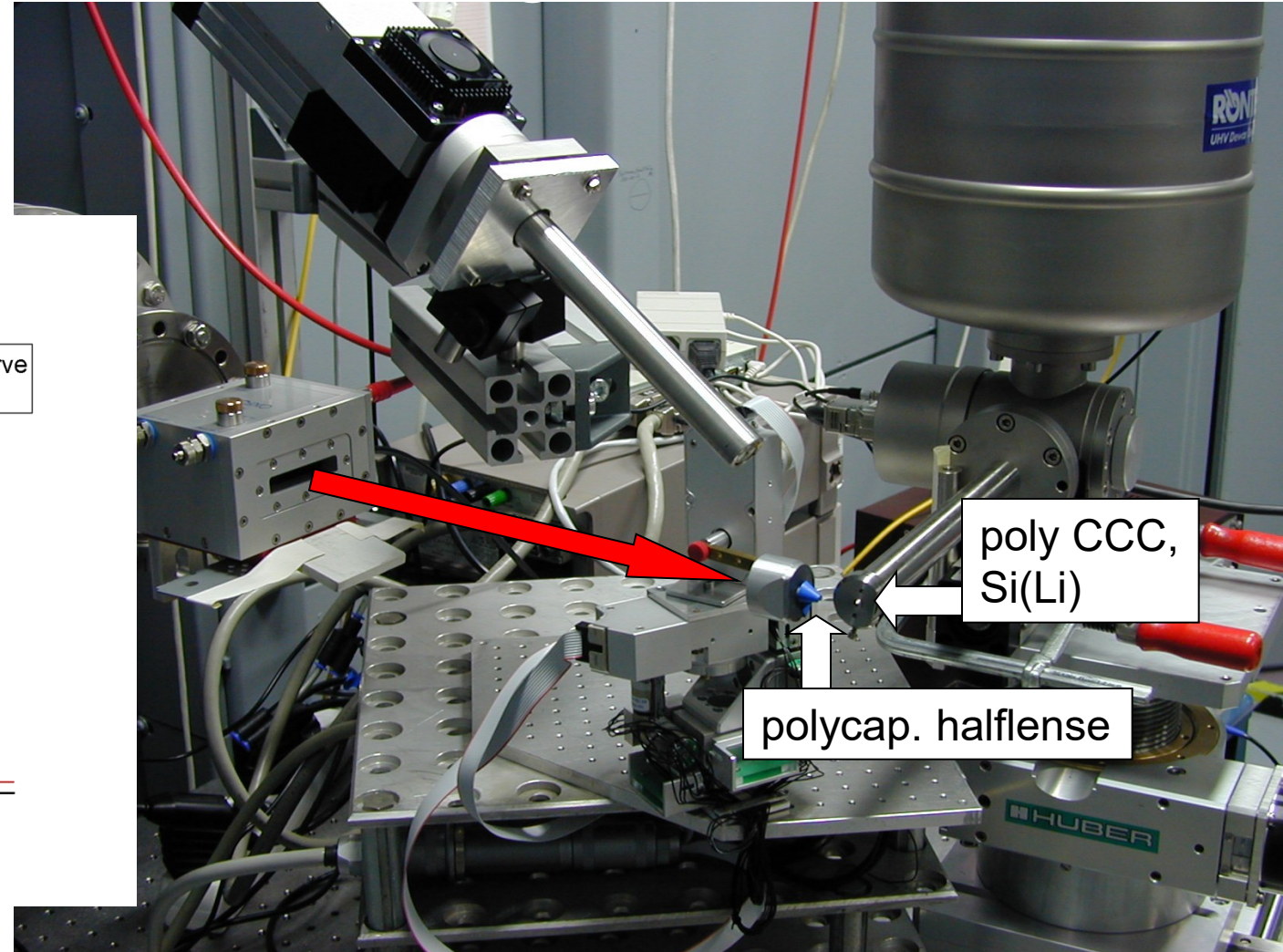
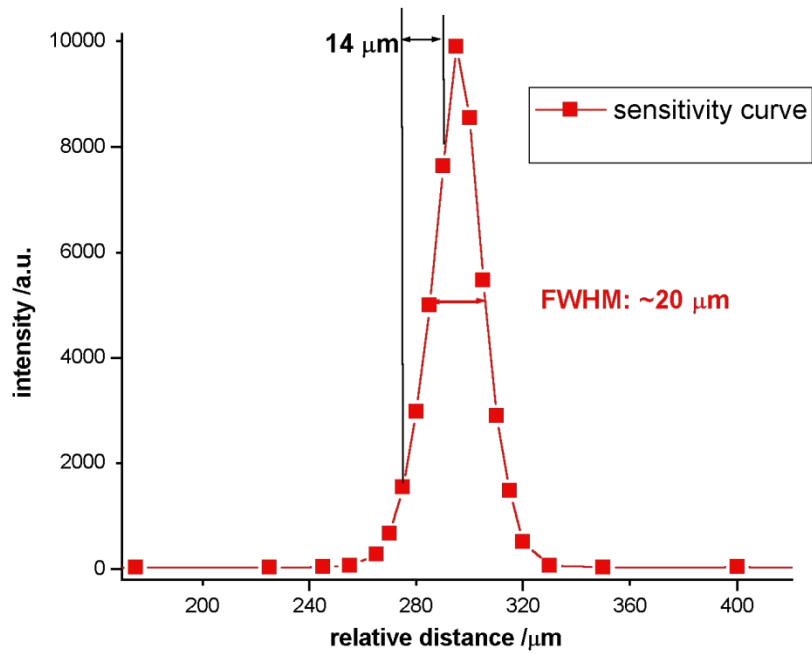
3D Micro XRS Spectrometer



B. Kanngießner at μ -spot BAM Line (BESSY)

3D Micro XRS Spectrometer

B. Kanngießner at μ -spot BAM Line (BESSY)

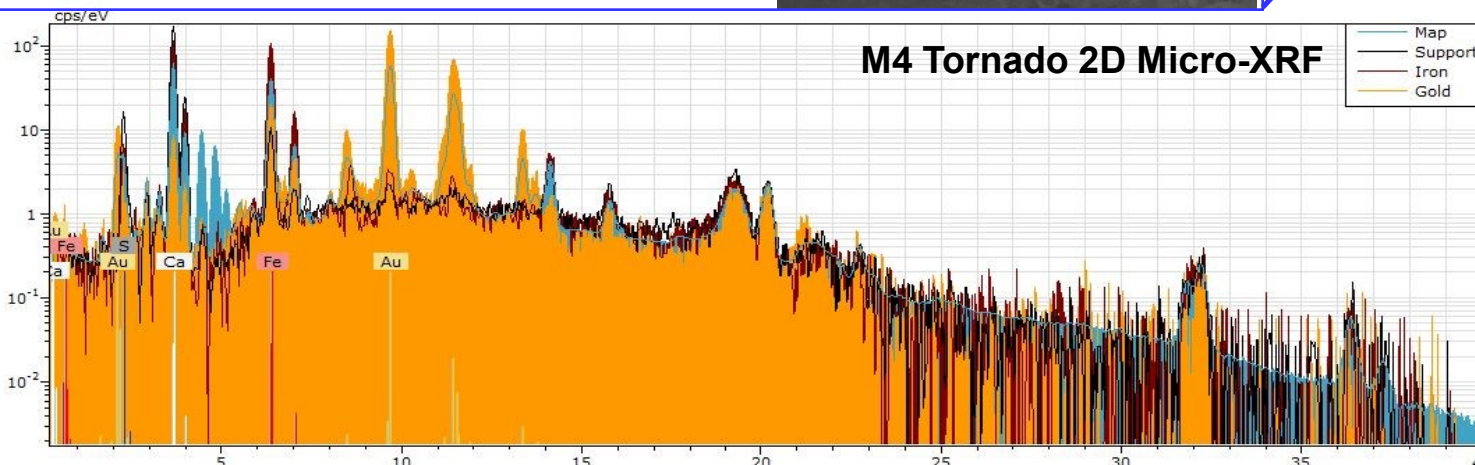
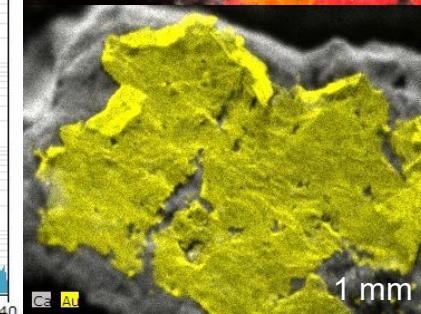
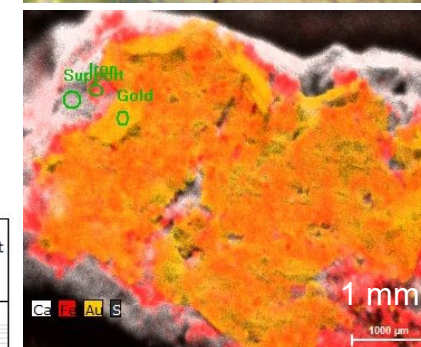
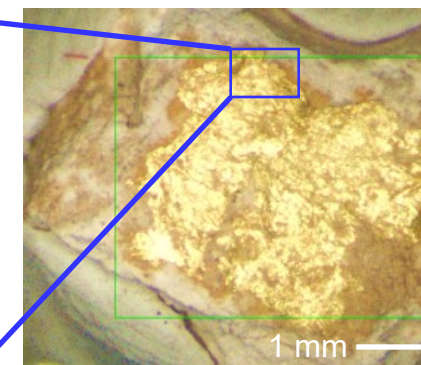
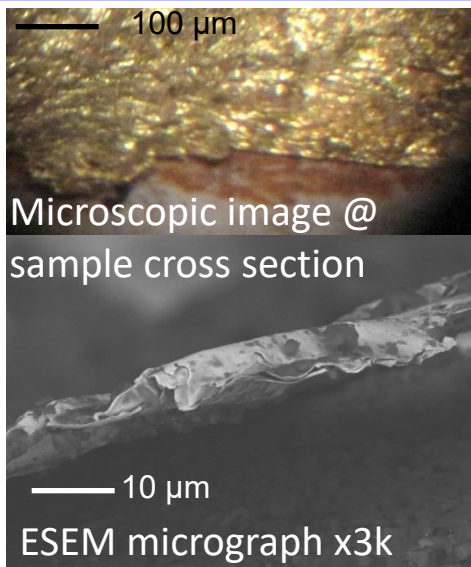
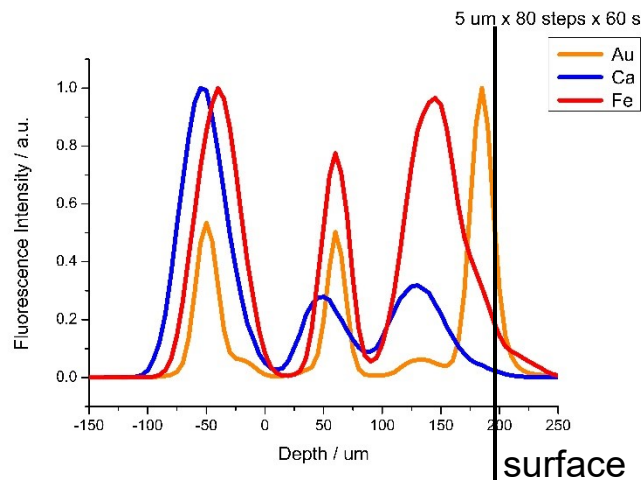


Elemental analysis

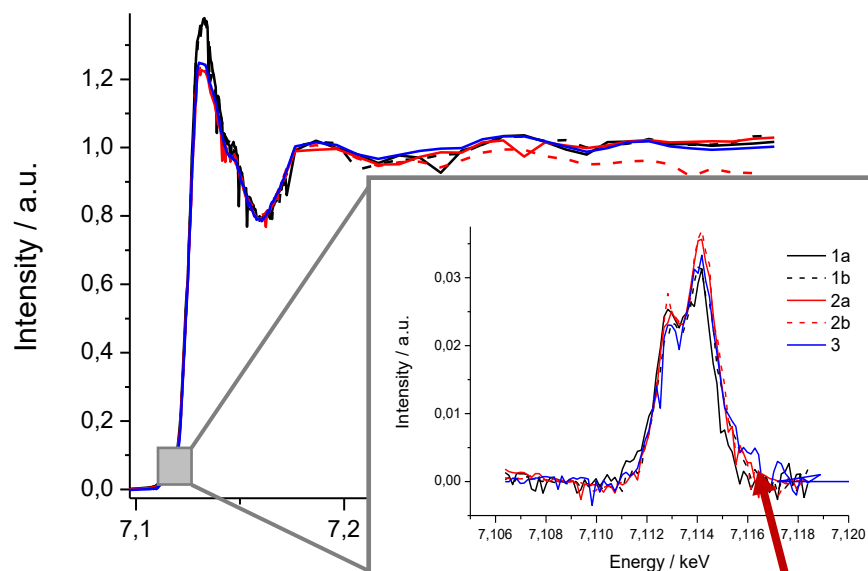
2D- μ XRF (Bruker Nano): Rh Tube, 50 KeV and 600 μ A. SDD Detector: <150 eV FWHM, resolution 25 μ m, 45°

3D- μ XRF (TU-Berlin): Mo Tube, 50 KeV and 600 μ A. SDD Detector: <145 eV, resolution 12,9 \pm 0,7 μ m; 45°

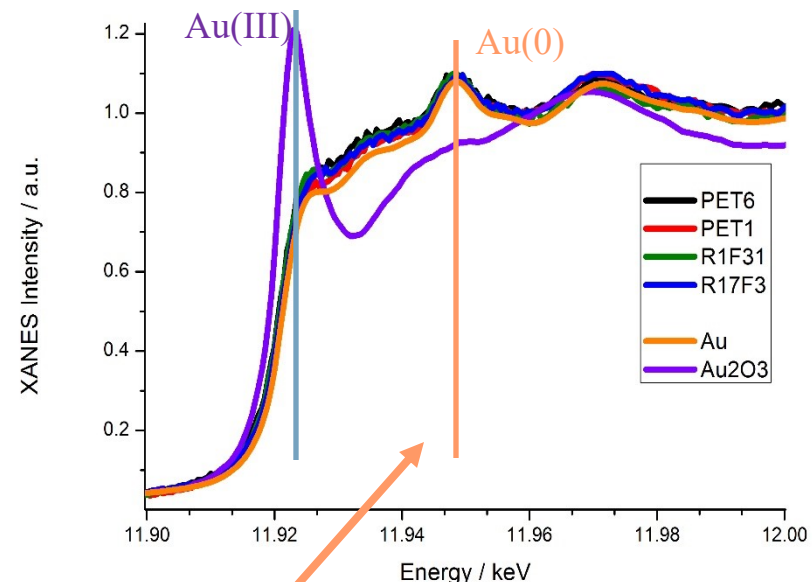
3D Micro-XRF



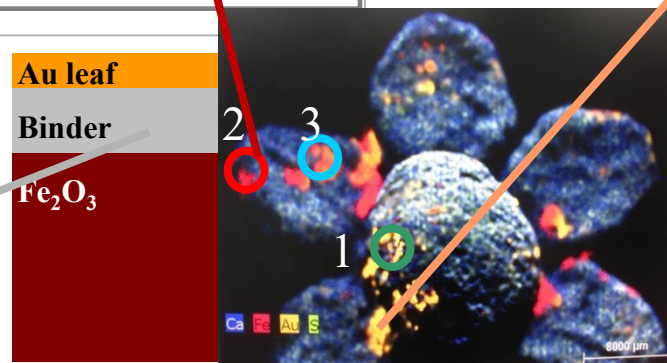
2D and 3D Micro-XANES @ Fe K α Edge



2D Micro-XANES @ Au L $_3$ Edge



- Centro-symmetric Fe:
6-coordinated Fe³⁺ → hematite Fe₂O₃
- Fe is unaffected by Au



Features of metallic Au are present as expected

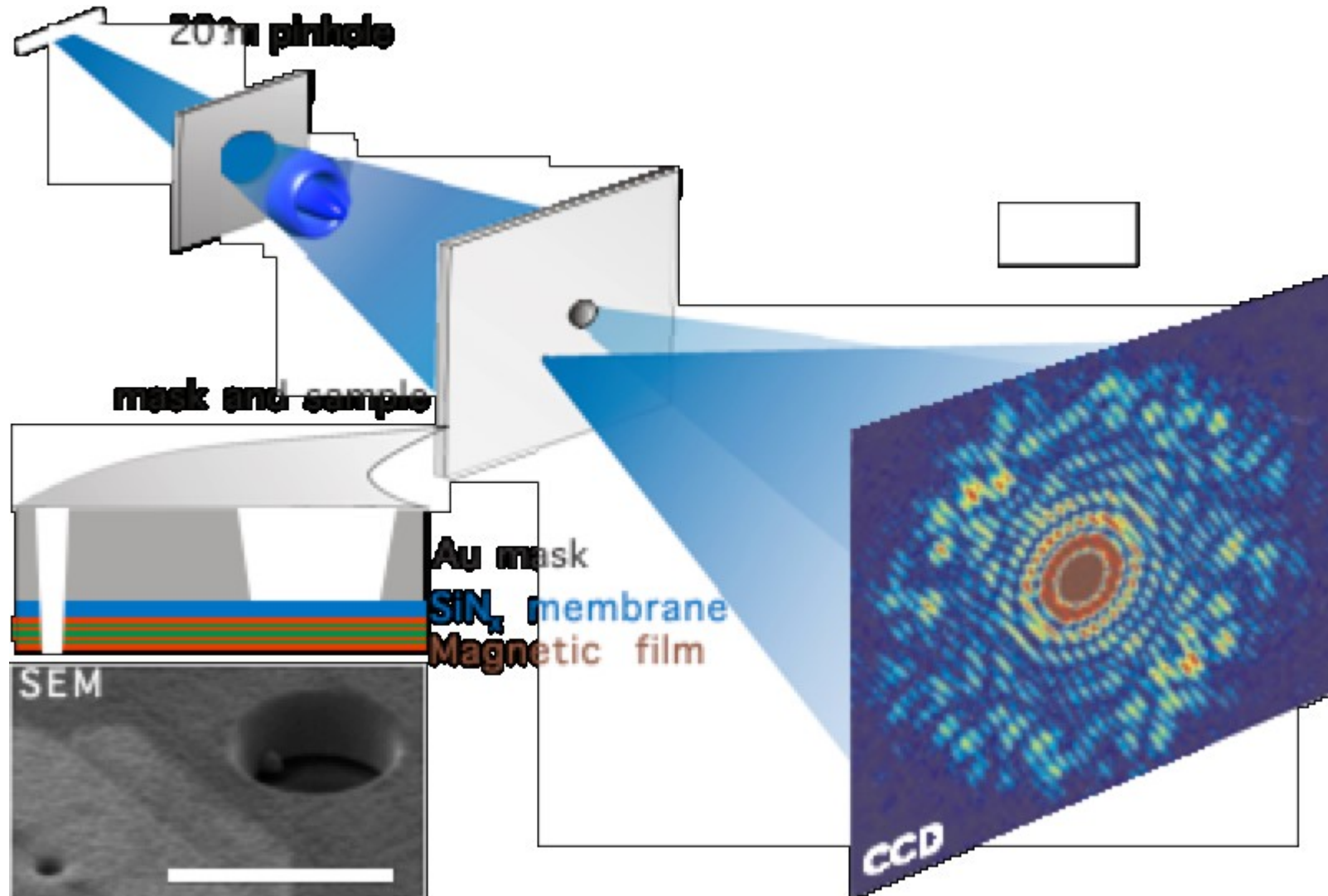
Protein based binder was reported as animal glue (collagen protein) (1;2)

●1a,1b: Fe+Au, center; ●2a,2b: Fe alone, leaf; ●3: Fe under Au, leaf

XANES measurements @ MySpot beamline, Bessy II →

7T-WLS-1 source; Si 311 monochromator; 7-element Si(Li) detector; E/ ΔE >10,000

Soft X-rays → Holografy with coherent X-rays





16 December 2004

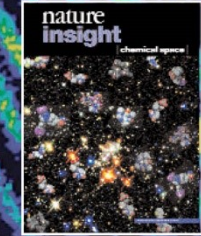
International weekly journal of science

nature

£10.00

www.nature.com/nature

Inside this week



X-ray holography

Lensless imaging at the nanoscale

The 'Halloween storm'
How the Sun plays its tricks

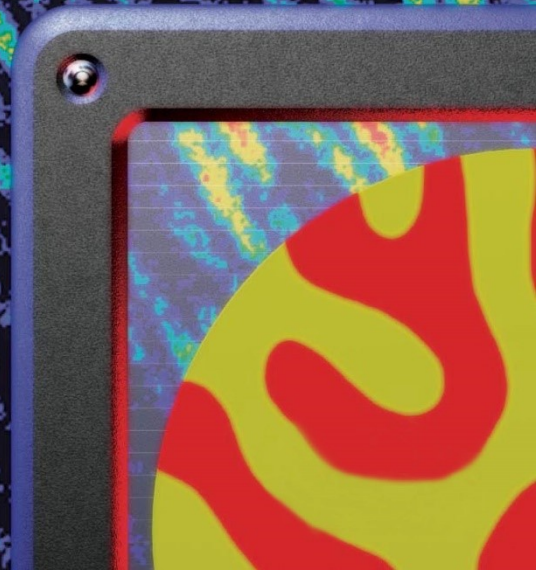
Protein transport
Escape from the nucleus

Duck-billed platypus
Curiouser and curiouser

Locusts over Africa
Time for biological control?

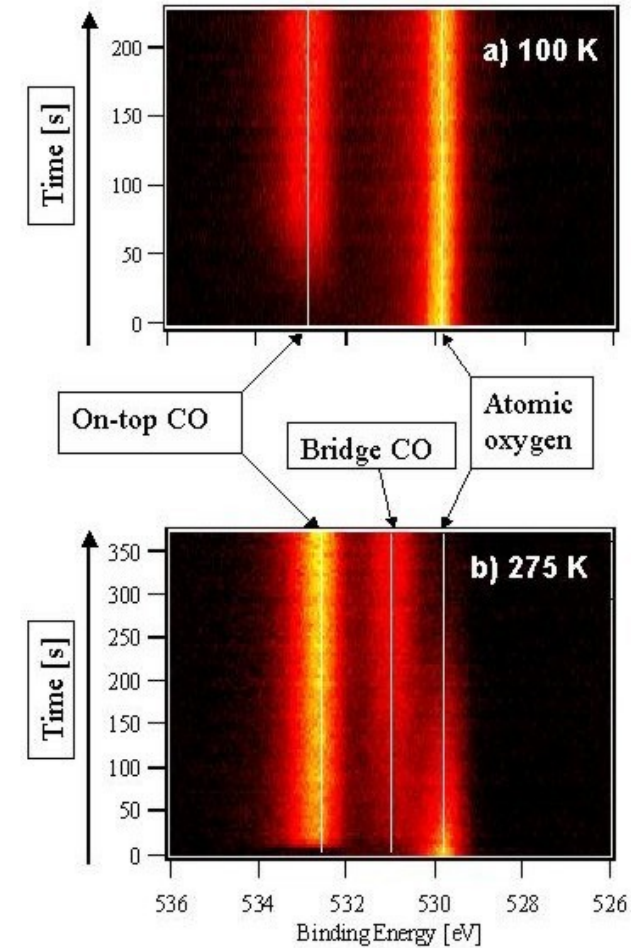
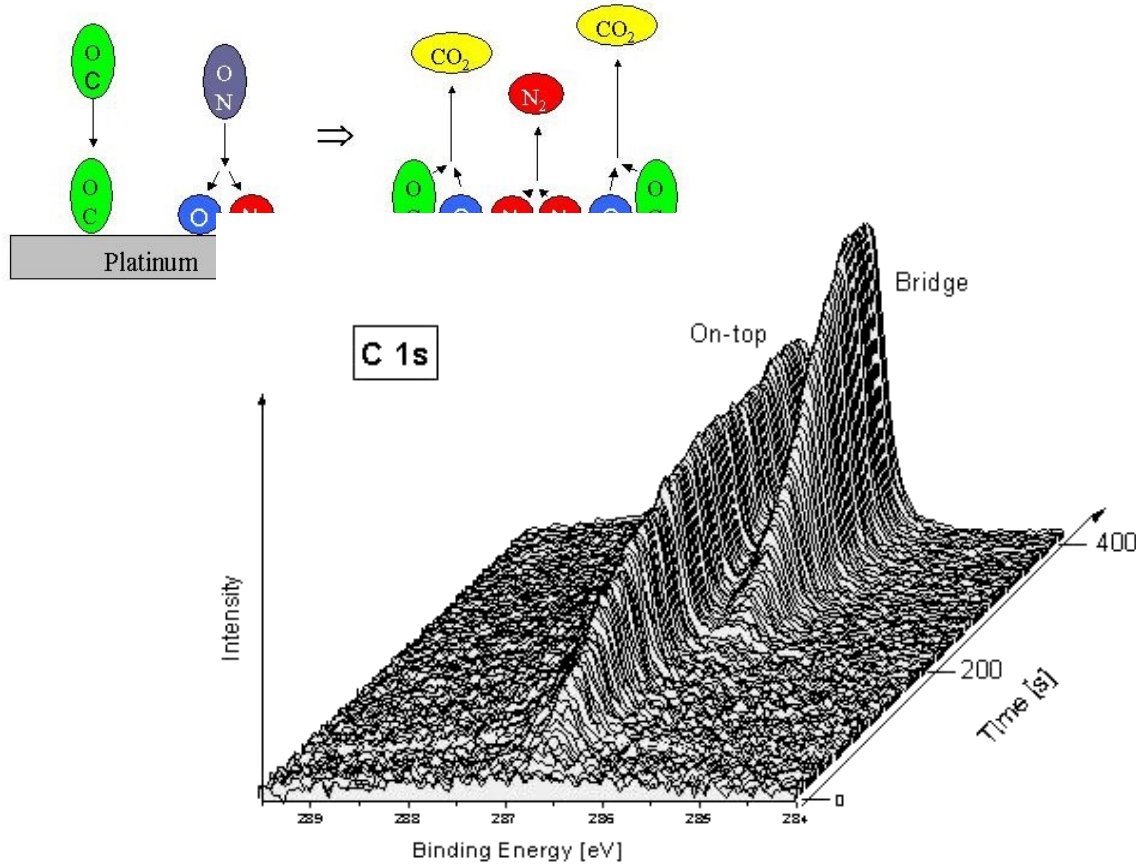
S. Eisebitt
J. Lüning
W.F. Schlotter
M. Lörger
O. Hellwig
W. Eberhardt
J. Stöhr

NATURE 432,
885 (2004)



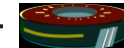


Chemical reaction dynamics on surfaces

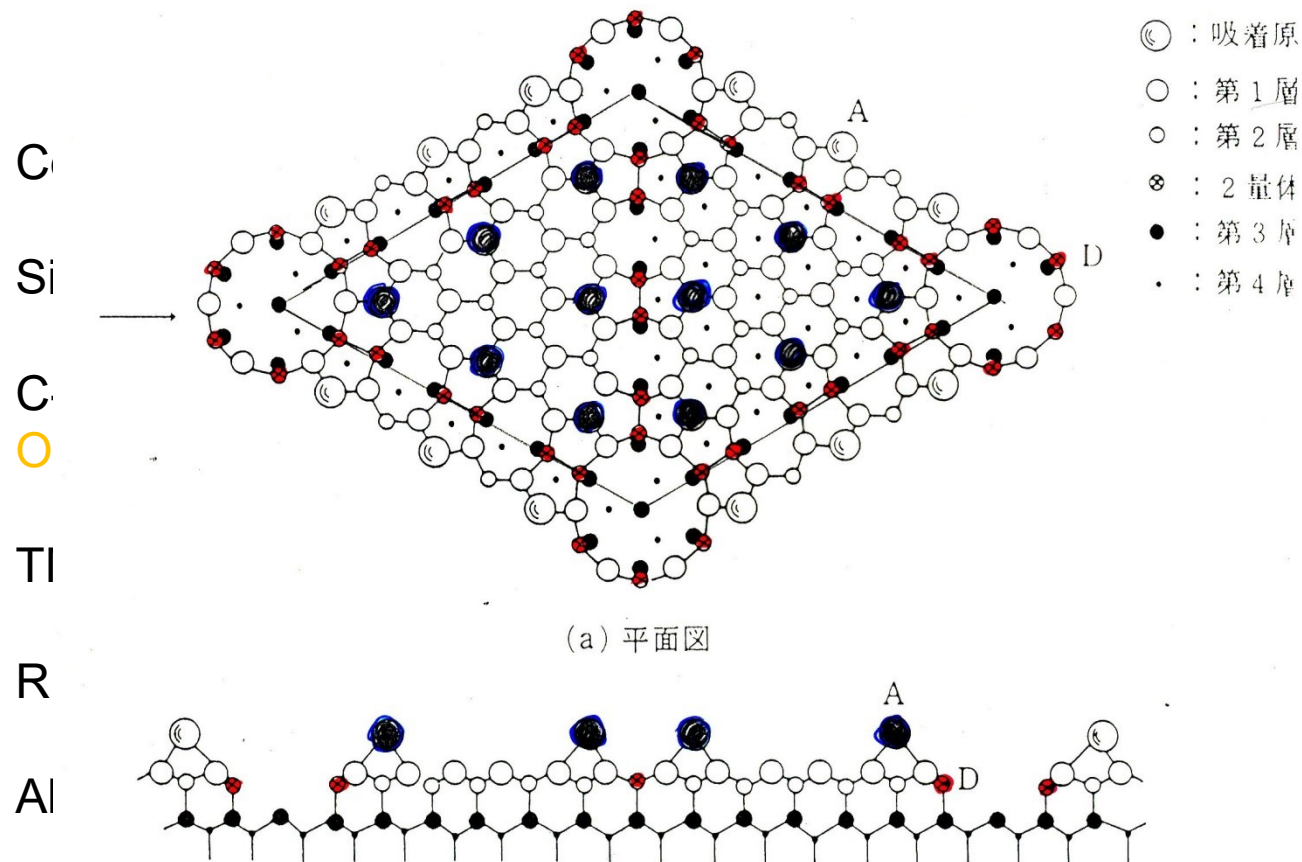


Binding sites of CO on a Pt surface identified by high resolution time resolved XPS

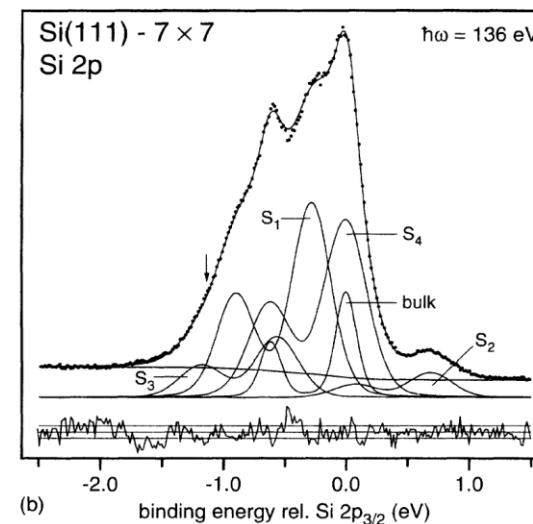
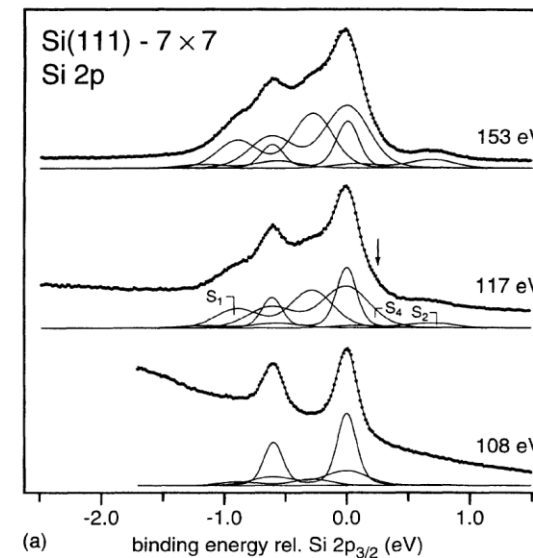
R. Denecke, M. Kinne, T. Fuhrmann, C. Whelan, J. Zhu, H.P. Steinrück (Univ. Erlangen)



Soft X-rays → High Resolution XPS



K. Takayanagi, Y. Tanishiro, S. Takahashi, M. Takahashi
 Surf. Sci. 164, 367 (1985)

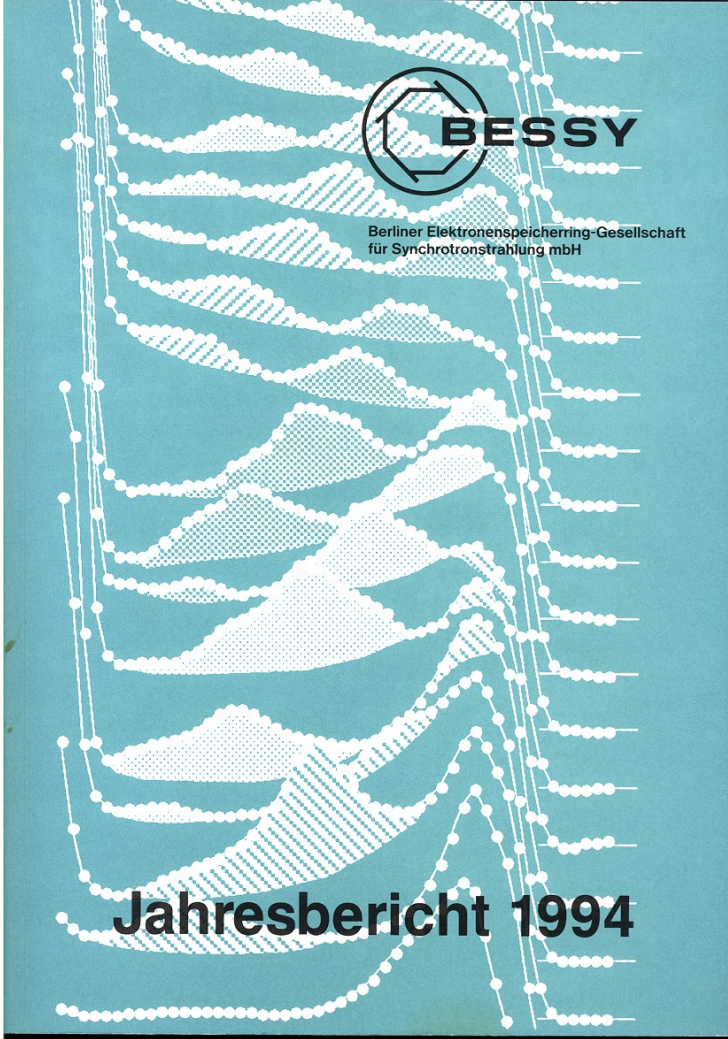
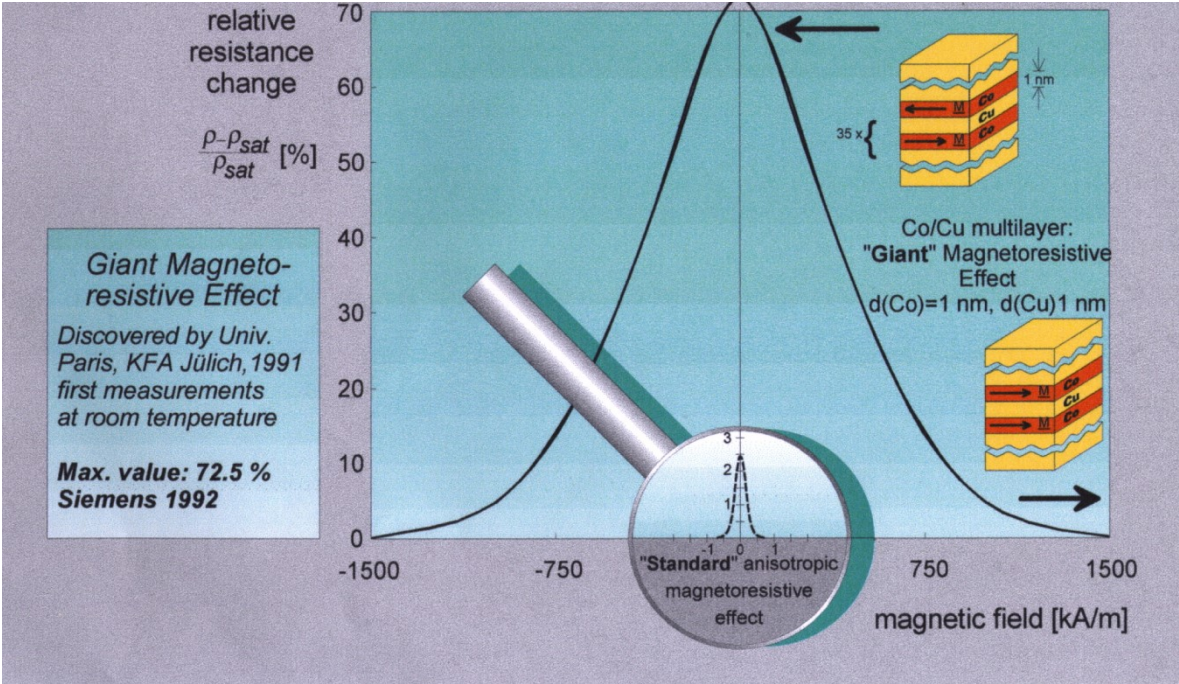


J.J. Paggel, W. Theis, K. Horn
 Ch. Jung, C. Hellwig, H. Petersen
 Phys. Rev B50, 18686 (1994)

Soft X-rays → High Resolution Spectroscopy

Spin Polarized Photoemission

Magnetic Quantum Well States at the origin of the GMR effect



The HESEB Soft X-ray Beamline

- Soft x-ray beamline will be an integral part of SESAME's suite of beamlines / instruments, contributing successfully to the scientific output of the facility
- The operation of the basic beamline (soft X-ray absorption with variable polarization light) will be completely funded by SESAME
- A CRG (collaborative research group) „business model“ at SESAME (cf. ESRF, ILL, ...) is offered for expansion/additional capabilities
- A CRG would have certain amount of entitled access time, remaining part is given to public use (after peer review)
- Several institutes from Turkey (SESAME Member) are in the process of forming a CRG that provides an (XPS-)endstation and operational staff
- Science Partners from Jordan and TU Berlin



Thank you